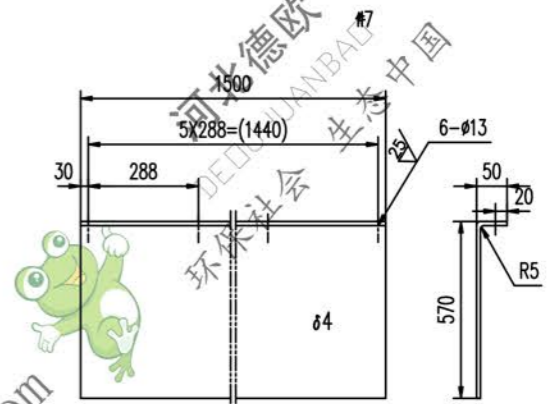
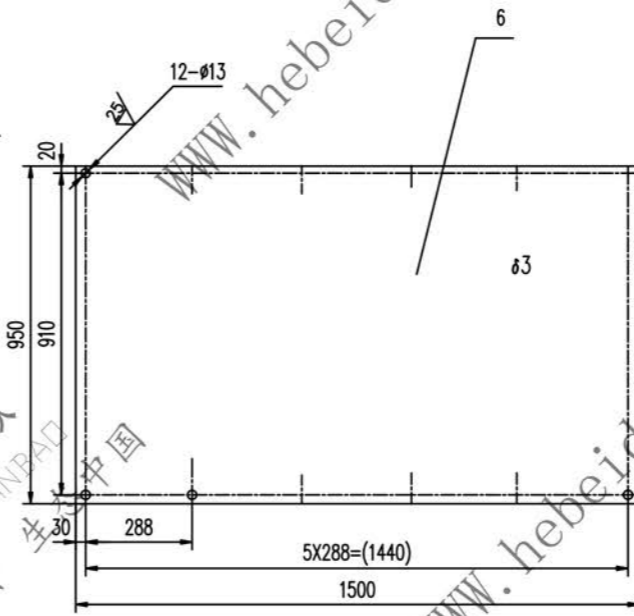
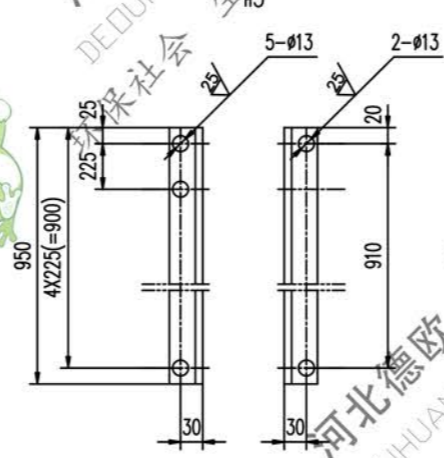
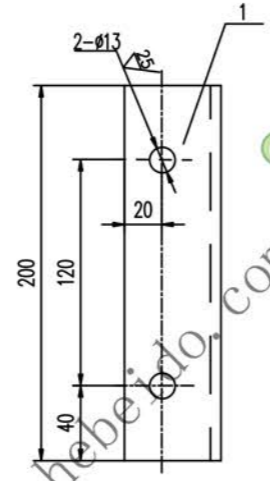
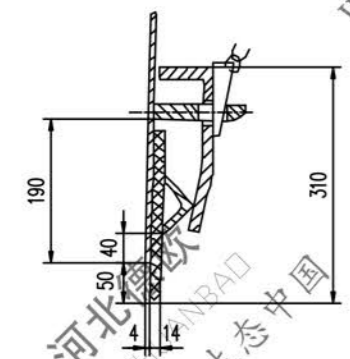
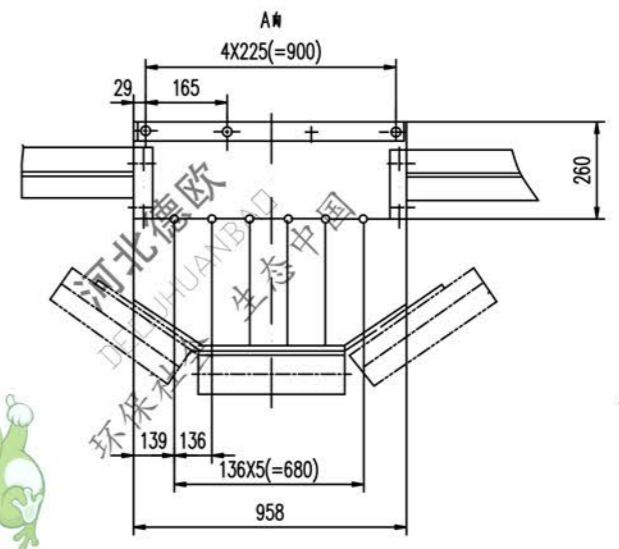
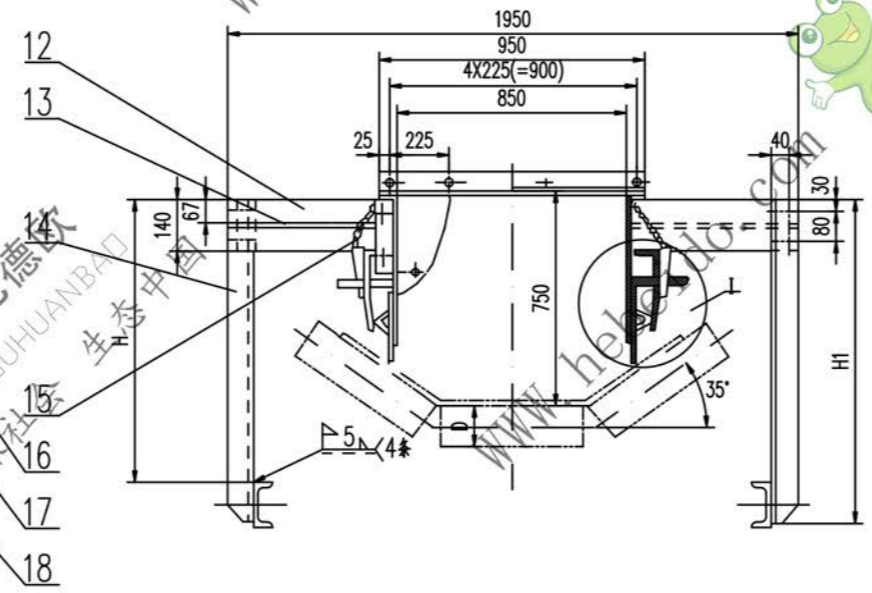
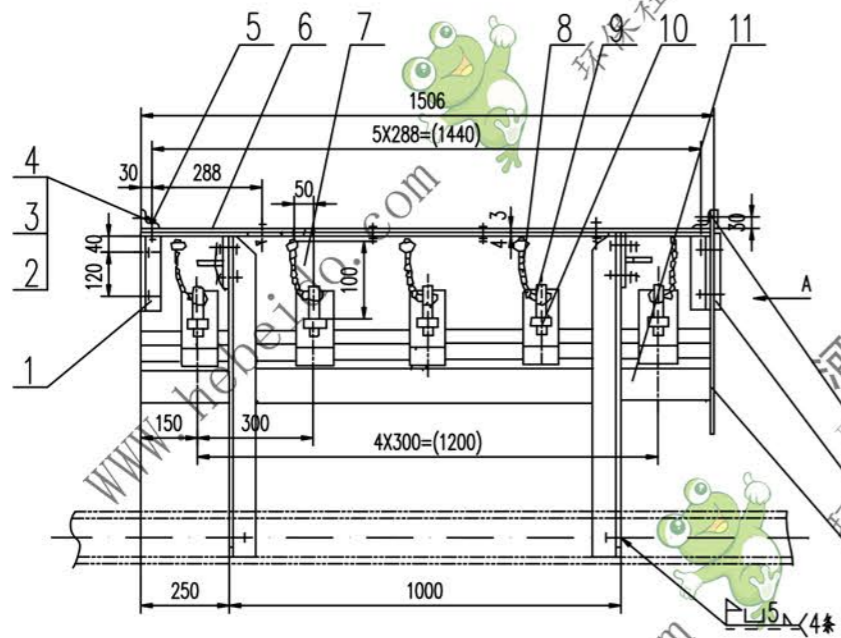
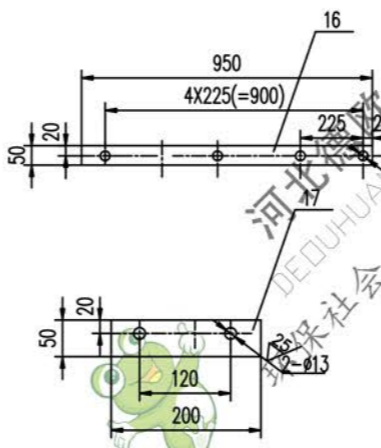
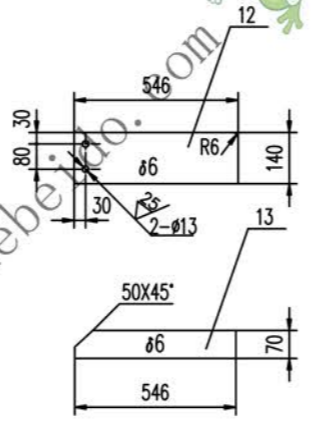
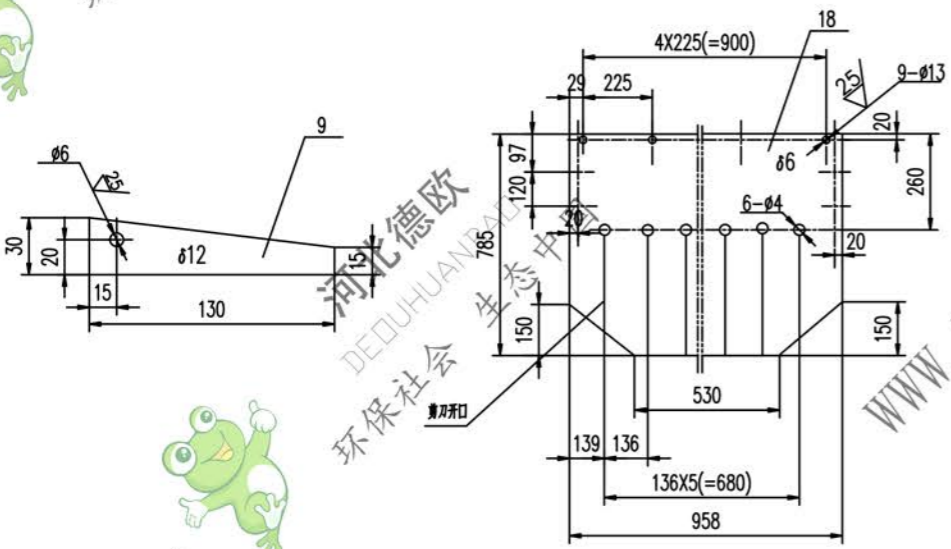


| 标记 | 文件号 | 修改内容 | 签名 | 日期 |
|----|-----|------|----|----|
|----|-----|------|----|----|



- 技术要求
- 件14下部与中间架相联的螺栓仅作安装调整用,待安装调整后应按要求焊死
 - 未注焊缝均连续角焊,焊缝高为被焊件最小厚度
 - 下料周边均为 R_{100}



表

| D | H | H1 | 质量kg |
|------|------|------|-------|
| φ108 | 981 | 1113 | 216.7 |
| φ133 | 1008 | 1148 | 217 |
| φ159 | 1038 | 1178 | 217.3 |

| 序号 | 代号 | 名称 | 数量 | 材料 | 单重 | 总重 | 附注 | |
|----|--------------|-----|--------------|----|---------|-------|-------|----|
| 18 | | 镀锌板 | φ6 | 1 | 镀锌 1804 | 6.48 | 6.48 | |
| 17 | | 钢板 | φ5 | 2 | Q235-A | 0.39 | 0.78 | |
| 16 | | 钢板 | φ5 | 1 | Q235-A | 1.86 | 1.86 | |
| 15 | II01J21111.4 | 螺栓 | | 10 | 螺栓 | 0.10 | 1.0 | 常用 |
| | II06J21111-3 | 角钢 | 70X70X6-1178 | 4 | Q235-A | 7.424 | 29.00 | 对焊 |
| 14 | II06J21111-2 | 角钢 | 70X70X6-1148 | 4 | Q235-A | 7.232 | 28.93 | 对焊 |
| | II06J21111-1 | 角钢 | 70X70X6-1113 | 4 | Q235-A | 7.060 | 28.64 | 对焊 |
| 13 | | 钢板 | φ6 | 4 | Q235-A | 3.6 | 14.4 | |
| 12 | | 钢板 | φ6 | 4 | Q235-A | 1.8 | 7.2 | |
| 11 | | 镀锌板 | 14X225X1500 | 2 | 镀锌 1804 | 7.11 | 14.22 | |
| 10 | II01J21111-2 | 钢板 | | 10 | Q235-A | 0.60 | 6.0 | 常用 |
| 9 | | 钢板 | | 10 | Q235-A | 0.27 | 2.7 | |
| 8 | II04J21111.1 | 压零件 | | 2 | 零件 | 14.17 | 28.22 | 常用 |
| 7 | | 钢板 | 4X620X1500 | 2 | Q235-A | 29.2 | 58.4 | 对焊 |
| 6 | | 钢板 | 3X950X1500 | 1 | Q235-A | 33.56 | 33.56 | |
| 5 | | 角钢 | 50X50X5-950 | 2 | Q235-A | 3.58 | 7.16 | |
| 4 | GB95-85 | 垫圈 | 12 | 40 | | 0.005 | 0.2 | |
| 3 | GB41-86 | 螺母 | M12 | 40 | | 0.016 | 0.64 | |
| 2 | GB5781-86 | 螺栓 | M12X30 | 40 | | 0.031 | 1.24 | |
| 1 | | 角钢 | 50X50X5-200 | 4 | Q235-A | 0.75 | 3.0 | |

图样编号: DTII06J21111

名称: 导料槽前段 B1400

比例: 1:1

重量: kg

共 1 页 第 1 页