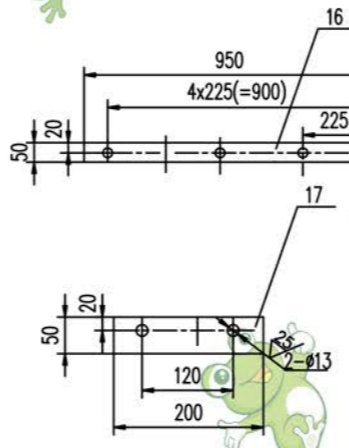
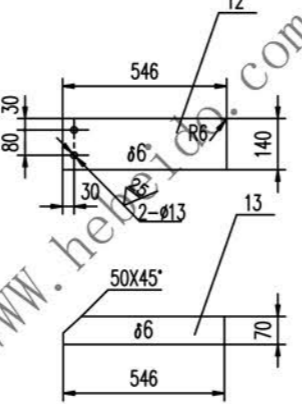
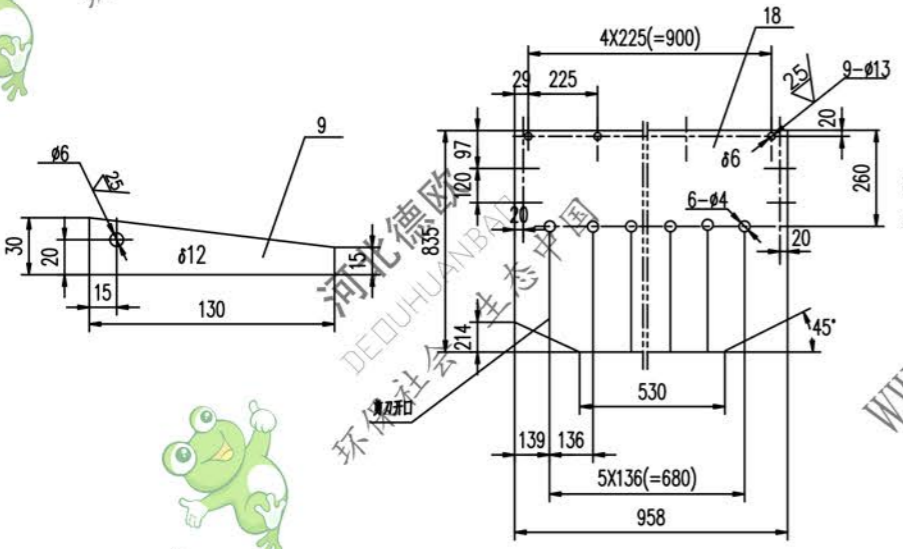
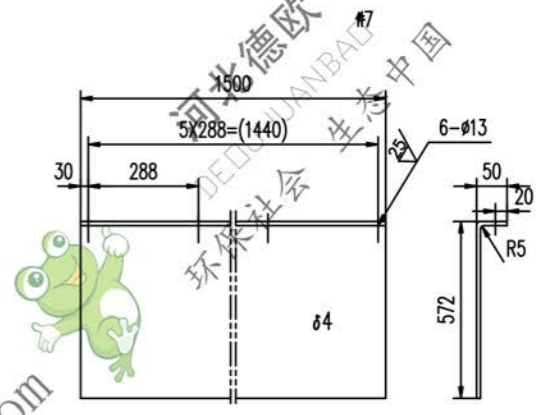
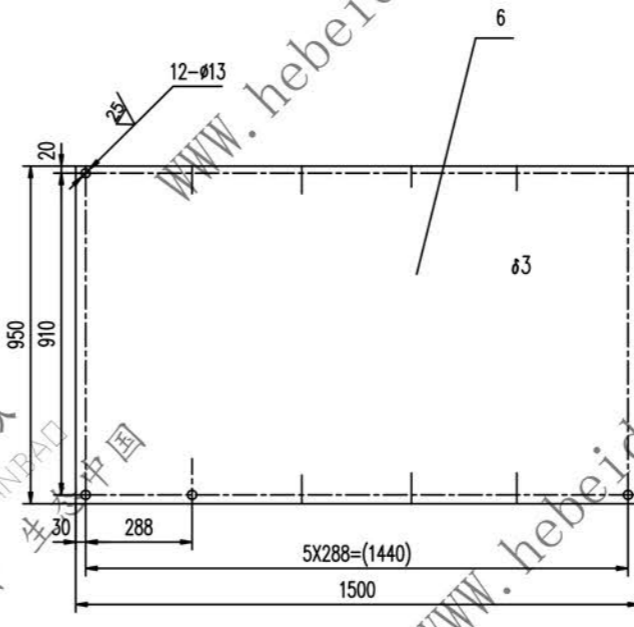
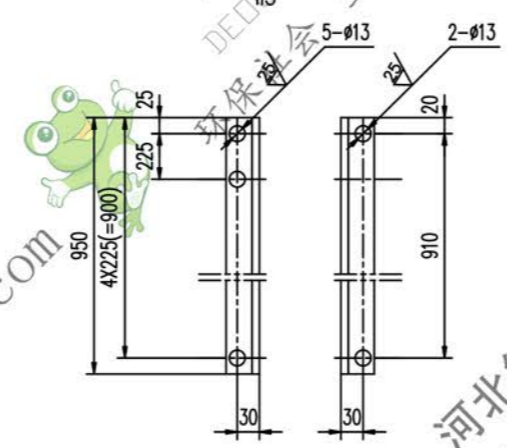
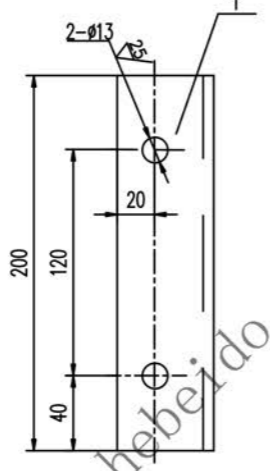
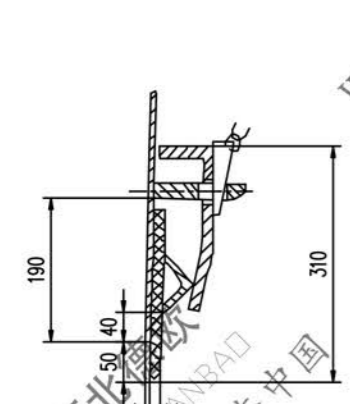
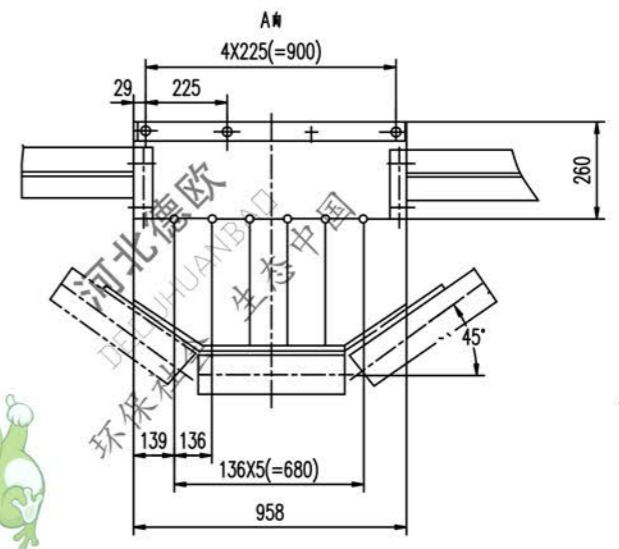
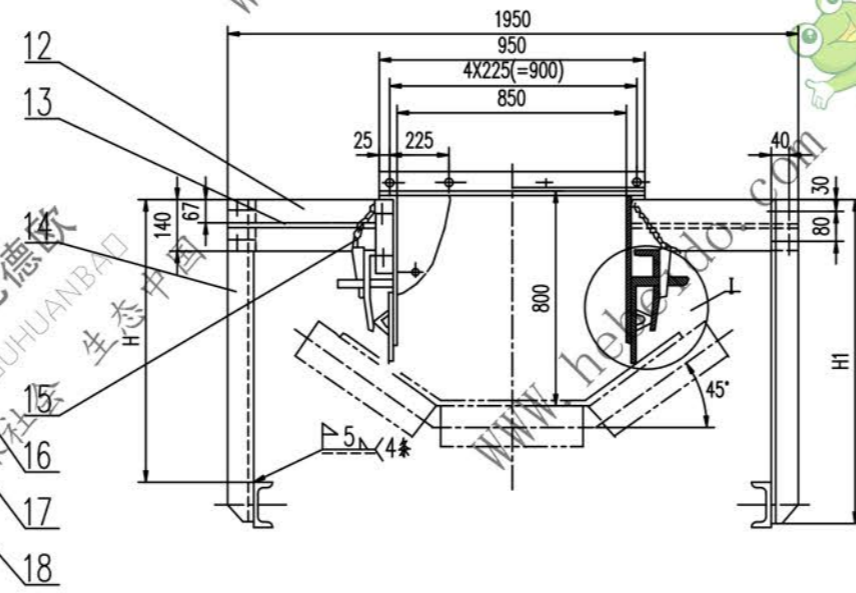
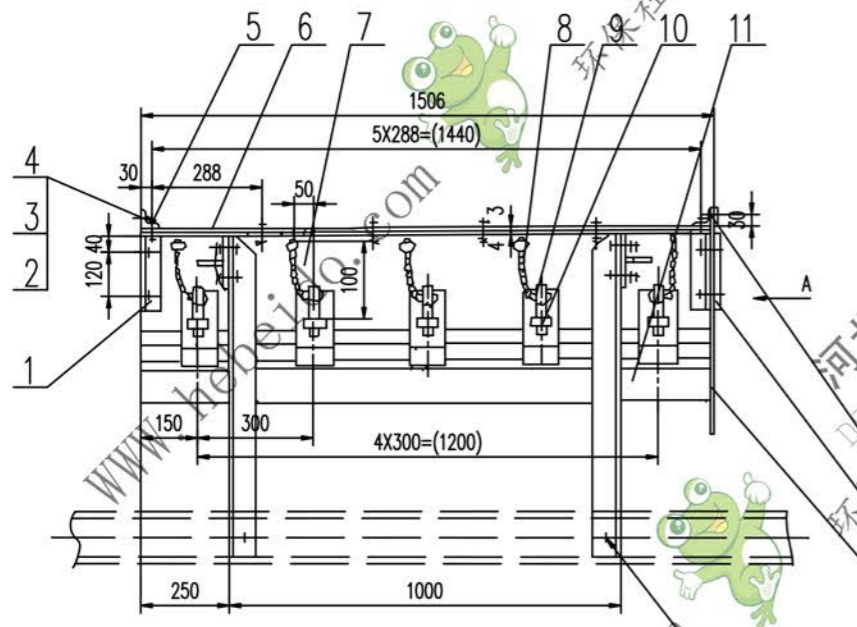


标记	文件号	修改内容	签名	日期
----	-----	------	----	----



技术要求
 1. 件14下部与中间架相联的螺栓仅作安装调整用,待安装调整后应按要求焊死
 2. 未注焊缝均连续角焊,焊缝高为被焊件最小厚度
 3. 下料周边均为R5

表

D	H	H1	质量 kg
φ108	1031	1163	214.5
φ133	1080	1188	215.2
φ159	1110	1218	216.0

18	镀锌板 δ6	1	镀锌 1804	7.11	7.11	
17	钢板 δ6	2	Q235-A	0.39	0.78	
16	钢板 δ6	1	Q235-A	1.86	1.86	
15	II01T21111.4	导线	导线	0.1	1.0	
14	II06T21112-3	角钢 70X70X7-1218	4	Q235-A	7.1	28.4
	II06J21112-2	角钢 70X70X6-1188	4	Q235-A	6.91	27.64
	II06J21112-1	角钢 70X70X6-1163	4	Q235-A	6.74	26.96
13	钢板 δ6	4	Q235-A	1.80	7.20	
12	钢板 δ6	4	Q235-A	3.60	14.4	
11	镀锌板 14X225X1500	2	镀锌 1804	7.11	14.22	
10	II01J21111-2	导线	导线	0.60	6.0	
9	钢板	10	Q235-A	0.27	2.7	
8	II04J21111.1	压零件	零件	14.11	28.22	
7	钢板 4X621X1500	2	Q235-A	29.25	58.5	
6	钢板 3X950X1500	1	Q235-A	33.56	33.56	
5	角钢 50X50X5-950	2	Q235-A	3.58	7.16	
4	GB95-85	垫圈 12	成品	0.005	0.2	
3	GB41-86	螺母 M12	成品	0.016	0.64	
2	GB5781-86	螺栓 M12X30	成品	0.031	1.24	
1	角钢 50X50X5-200	4	Q235-A	0.75	3.0	

图样编号: DT1106J21112
 图样名称: 导料槽前段 B1400
 比例: 1:1
 共 1 页 第 1 页